

Our Spire

Volume 43 Number 7

September 2023

**Reaching Up
to God,
Reaching out
to People**



From an option to a necessity

I'll find out in less than a week if elementary school teachers assign the following writing assignment on or near the first day of school. The assignment is "How I spent my summer vacation."

Maybe you had to write one or two of those in your lifetime as a young student. I think of this as I come back from vacation. What I realized this year, as I have in the past, surprises and challenges me, as your pastor. The surprise? If you don't HAVE to go to church every Sunday, I begin to see why people DON'T go to church each Sunday. When I'm working, there is no option. You go to church. Period.

When I'm not working? All sorts of thoughts come along. Well, it's a nice day. I can watch online later. Or, you know, life would be so much easier with those couple hours off on a Sunday, and doesn't God want us to both rest AND enjoy? And church? Well, that's a task, event, or adventure. Tasks, events, and adventures are options, not must-haves.

I see how church can go from a necessity to an option.

My challenge is every pastor's challenge. How do I change this? How do I help people hear God closely enough to make every church experience not an option but a must have experience?

The joy of my vacation is I can think long and deep on questions. I realized in my weeks away that the four distinct worship experiences I had could be seen as separate. I mean here that someone could think one church experience is completely independent of another. One Sunday didn't build upon another, right? In a college course, I had to make it to every class (or nearly every class) to receive the passing grade. Also, each class built on the one prior and was a steppingstone to the next class.

Church? You can see my point.

I care about you and your presence during worship. Your spiritual connectivity and your relationship to Christ aren't inconsequential. They're a gift! They are also the base on which you live your life or should live your life.

As we approach and begin this upcoming season—fall—I am taking on this independent, one and done church experience mentality. The thinking that "This is nice, but I don't *have* to come again" is about to meet a four-part series on something each of us experiences, and that's conflict, crisis, and controversy. Each Sunday is built on the one prior, and each Sunday connects us not only to each other and the church experience, but also to unavoidable life experiences.

To find out more of what I mean, continue to the September sermon series intro on the next page.

Like it (and maybe not like it!), but you're a peacemaker!

You choose—or maybe you're unavoidably thrown—into conflict, crisis and controversy. You can sidestep it, slide around it, or shut yourself down through it in the hope that it goes away.

But the truth is Christ gives us what we all know, which is the opportunity to live through Him and share His love through the events (and yes, even the challenging events) around us.

One event inspired this September sermon series. It is the moving of the 9 Partners Monument from its original site to its current location on the green in the center of Harford.

Yep. Conflict.

Some of us (most of us?) want to avoid conflict. We have an OPINION. Perhaps we have a strong, embedded or even passionate opinion on some things. One of those may be the monument.

As a pastor, I don't do divisive. Often (or I'd say almost always) I don't offer my opinion at the pulpit because I don't feel the pulpit for the pastor is a place for opinion. Instead, the pulpit and the lessons from it are scriptural, informational, healing, empowering, and, at the least, helpful.

So, we have for some what is very important, and that's on where this historical marker should (and shouldn't) go.

In this month-long, four-part sermon series, I am taking on something not only topical but also current. You will not hear my opinion on where the monument should be. You will hear how we are called to be peacemakers. You may be at peace where the monument is. Or this may not be that important to you. But I can share that monument and its placement are important to some.

The focus on the upcoming series won't stay with the monument each week, but the monument presents a springboard for us all to see how we do live in a world that includes conflict, crisis and controversy. What are we going to do with conflict, crisis and controversy not only with events and happenings around us, but also within our family dynamics will be explored. We will go one further in this series. What are we going to do with events and happenings within us that can cause stressful dynamics?

I remain guided by two golden pieces of advice from two of you. The advice givers are independent but relate to each other. Someone I respect once said, "Talk about us." He meant that as his pastor, he wanted sermons to talk about those present. The other well-intended advice, which also came from someone I respect, said, "Talk about current events."

Jesus calls us to be peacemakers. He didn't say we are to be peacekeepers (though we are to be this, too). Jesus means that we are literally to make peace not only with those in the world around us, but also within ourselves so that His unifying love prevails.

Join us in September. It is time to make peace, live peace, and share peace.

Pastor's Report to Council - July

Our first summer with a sermon series happened this month. I called our three-part series "Beat the Heat". I used this sermon series title to address how we can all get hot. Specifically, we can get hot inappropriately with anger. A sermon series on anger management may be well received, but one on beating the heat puts the positive spin to the positive information anger can bring us.

I shared from the pulpit it is never appropriate to act on anger. Ever. I also shared in the first sermon how anger over injustice, unfair practices, marginalization, voicelessness, cruelty, or abuse of *any* kind brings right to the forefront "That's not right!". When angry, something isn't right. When we realize this, we can then turn to and listen to God through prayer and other voices of love, justice and mercy speak God's work into action.

We began the sermon series with Naaman who, as scripture tells us in 2 Kings, is angry. Others recognized and spoke to his anger and those in church around us recognize and speak to our anger. Next, we were on the water walking with Peter. Peter wasn't angry, per se, unless you think he was angry at himself for taking his eyes off Jesus and "failing" in his faith. We can feel the same way when we fall. Like Peter who could have walked away from Jesus after his big splash, he inspires us to do what we can do, which is walk with Jesus. The series concluded with John, the author of Revelation. Said simply here for time and space, when we get angry, we can turn to God and worship.

This month I was asked by the editor of *The Independent* to write the news story about the vandalism that occurred at the newest site for the Summer Lunch Box Program. I interviewed Paula Smith, founder and president of the 501c3. That interview made it's way into the Peter and the boat sermon: Jesus calls us to ministries just as He called Peter and Paula to their specific, God-blessed ministries.

I wish to thank Christian Education and Outreach for sponsoring my three older children to Rock Mountain Bible Camp the week of July 17th. To hear them recite Bible verses in conversation and sing new (to them) Christ-based songs around the house is a treasure. Four children went to camp in total. All of them truly enjoyed their week with Christ and all four want to return to camp next year.

I will preside over the funeral of Joanne Decker on Saturday, July 29th, at the South Gibson Methodist Church. I will be working with Pastor Annette, the pastor of this church to honor the life and legacy of an amazing, gifted, creative and giving soul. Prayers are asked for the family through this time of loss. I will also be present at the service of Eagle Scout Travis Bridgeman on July 29th. I have been asked to deliver the prayer at the service that will take place at the Clifford Park.

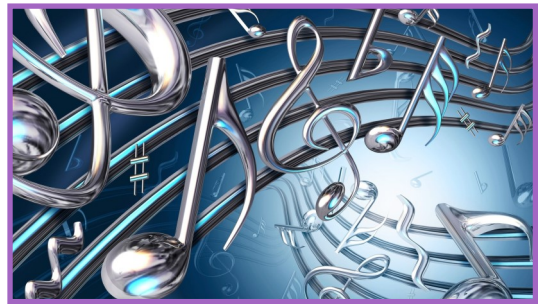
I visited with two pastors at two different times this month. Talking about my God-led ministry and about this congregation was a blessing. I could put things into perspective and see our relationship, our mission, and our call clearly in each conversation.



The Winemiller Family
Spire Sponsor

Hymn Dedication

Dedicate the Offertory Hymn of any Sunday Service in Honor or in Memory of someone. There is a sign up sheet in the Hallway next to the Flower sign-up sheet or place a card in the collection plate with the hymn and the name of the individual to whom you wish to honor.



Beginning Hand Bell Choir

Our beginner hand bell choir has started. Practice will be held right after church every 2nd and 4th Sundays starting up again in September.

No prior experience is necessary and the ability to read music helps but is also not necessary.

Please text or call Earl Cottrell for question or to let him know that you are interested at 701-405-3417.



Spire Sponsors

We need Sponsors to help us cover the cost of printing and mailing the Spire. Please let us know if you can help. The sponsorship can be in Memory or in Honor of someone or just a donation. Mailing costs approximately \$75/month. Please send to:

Harford First Congregational Church—UCC PO Box 217 Harford, PA 18823

Summer Lunch Box Update

The Summer Lunch Box Program has finished the first summer in the old Master's Concrete Office on Rt 11 in Hop Bottom.

The space was cleaned and stripped out the office space and setup with new shelving, freezers and refrigerators thanks to the donations of so many.

Willing Workers and Missionary donated enough to buy 2 huge chest freezers. The STELLAR VBS collected food. Lenox VFW sponsored a BBQ Chicken dinner that provided much needed funds.

This program fed a total of 616 children throughout through the summer in Susquehanna county:

282 children - MountainView/Blue Ridge

124 children - Elk Lake

132 children - Montrose at Interfaith

8 children - Montrose/Choconut

Total Grocery Expense: \$40,450.48

Total Milk Expense: \$ 4,796.05

Total Expense: \$45,246.53



Missionary Group Yard Sale and Furniture Sale



Just the beginning!!! The gathering room was completely filled with yard sale donations from top to bottom and side to side! Bill Chichester packed the entire space with loads of help from missionary and the congregation!!



Loads of stored yard sale items were sorted, cleaned and displayed by hard working volunteers and Missionary members. It took a year of collecting and 1 1/2 months of sorting and cleaning to prepare the sale.



Furniture was collected and sold from an off-church site for months prior and after the actual sale at the church.

The yard sale brought in \$3162.57.

The furniture sales have brought in approximately \$5590 to date.

We are currently at approximately \$8753 total for the combined effort!!



Thank you to all that donated, purchased or worked to make this yard sale a success. All proceeds go to help our church, community, county, state, country and the world through our mission efforts!!

Willing Worker Big Group Meeting

August 2, 2023

The quarterly meeting of the Willing Workers was called to order by Kay Gow in the lecture hall at 6:30PM. Members present were: Ivie Simons, Sharon Kinney, Kay Gow, Wendy Phillips, Priscilla Allen, Holli Chichester, Peggy Empet, Kandy Wellman.

A motion was made by Sharon Kinney, 2nd by Holli Chichester that the minutes of the last meeting be accepted. Carried. Sharon Kinney, treasurer, went over her report. A motion by Ivie Simons and 2nd by Holli Chichester to accept Sharon's report. Carried.

OLD BUSINESS:

The stove isn't fixed. The repairman is waiting for parts.

Kandy ordered a new gun safe lock and has installed it. She is going to order a second so we will have extra keys.

Welsh cookies will be sold for \$5 a dozen and \$2.50 a half. Fudge is \$10 a pound. Kingsley will work on getting all the cookies more uniform.

The sign over the booth will be put up. It was decided that set up is Saturday, August 12, in the morning. Some might go on Friday.

ROAST BEEF DINNER—October 21.

Motion by Peg Empet and 2nd by Sharon Kinney that there will only be one ticket price of \$14. This will eliminate a child's portion which has been almost as large as an adult portion. Passed. The time is 3:00-5:30 for pick up only. Holli will make 350 dinners as we did last year. We will need 50 pumpkin pies (17 per group). Pie plates will be available in the Lecture Hall.

It was decided to have a meeting before the dinner to finish planning (September 6 at 6:30 to organize). Tickets will be handed out and the schedule. Tickets and/or money will need to be in by October 15th. Ivie will get the help for filling the containers. Holli will get kitchen help and dippers.

Kingsley-4 present-Made Welsh cookies

Harford-1 present-Making fudge on Aug 7.

North Harford-3 present-Making fudge on Aug 3.

The meeting adjourned with a motion by Holli and 2nd by Sharon. Carried.

The next meeting is Wednesday, November 1 at 1:00 in the Lecture Hall.



Ivie Simons, Acting Secretary



“Log Cabin” Report

The Willing Workers grossed \$9,351.05 during the fair at the “Log Cabin” in the Carriage House. Thank you for your support!!



Richard Lee
3388 Ridge Road
Montrose, PA 18801
570-278-0947



Marilyn Light
194 West Lantern Way
San Tan Valley, AZ 85143

Allan and Kaylee Phelps,
Conor and Brynlee Wynn
Apt. #1
2352 State Route 547
Kingsley, PA 18826.

Ray Frederick
Hilltop Retirement Community
725 Lee Circle M56
Johnson City, NY 13790

Correspondence

I would like to express my thanks to all who supported me during my wife Margaret's long illness and recent death. Words cannot convey what you have provided me in the way of comfort and concern, especially with your prayers. Your kindness was above my expectations and will never be forgotten. You are truly a caring congregation.

Thanks again, and may God bless you all.
Ray Frederick

From: The Catholic Choral Society, Barbara G Barrett
Contact at 570-954-1242

CATHOLIC CHORAL SOCIETY OPENS 75TH SEASON

The Catholic Choral Society will begin its 75th year on Tuesday, September 5th, with rehearsals on Tuesday evenings from 6:15 PM to 8:30 PM at the IHM Center at Marywood University.

New members are welcome, and no auditions are required.

The Choral Society is nondenominational and composed of members from Luzerne, Lackawanna, Wayne, Susquehanna, Pike, and Wyoming counties. The chorus performs sacred, classical, and secular music at performances in Northeastern PA counties.

The Catholic Choral Society's first concert is the annual November Generations Concert on Sunday, November 12th at 4PM when the chorus will host regional choral groups from elementary school through college at the University of Scranton. Additional choral programs are scheduled for the Advent, Christmas and Lenten and spring seasons.

Spire Sponsor

For all the people who are ill or no longer able to attend church anymore in person. God Bless you All!

Patricia Forsyth

Trustees—August Minutes

Irv Needham, Randy Decker, Kandy Wellman and Rick Masters were in attendance.

Old Business:

Kandy will arrange to have the carpets cleaned after the Church yard sale concludes

It has been discussed in prior meetings to possibly modify the front doors of the Sanctuary. At this time Trustees are awaiting direction from Council as to further action in regards to modification or other alternative security measures.

Irv will research the necessary regulatory placement of fire extinguishers signage before they are installed.

New Business:

Irv installed the Automatic External Defibrillator (AED) in the entrance to the Gathering room. This equipment is designed to be operated by anyone in an emergency, however, people should familiarize themselves with the operation of the equipment. There will be an article in the September Spire.

Kandy Wellman will ask Brendan Herbert about his intention to do snow removal for the upcoming winter.

Motion to adjourn by Randy seconded by Kandy

Respectfully Submitted,

Rick Masters, Secretary



Sunday School Kick-Off

September 10, 2023

9:00 - 9:45

Begins in the Lecture Hall



Youth and Outreach Fair Dinner

The Fair Dinner was on August 19, 2023. We served Brooks BBQ Chicken, cole slaw, macaroni salad, baked beans, roll and butter, bar cookie and a drink. We made just over \$1600!!

This money will be used to send our children to Rock Mountain Bible Camp next summer. This year Xander Graf, Tavin, Sereena and Emma Hagenbuch attended Rock Mountain Bible Camp. Jonathan Symuleski was a counselor there.



Home Bound

Martha Jenkins

Norma Carey

Lynola Carey

Dorothy Greene

Vivian Rutherford

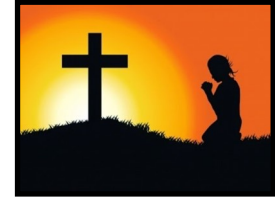
Joanne Connolly

John Zimmerman

JoAnn Titus



Prayer Concerns



- We pray for our nation to be blessed and that our nation seeks its blessings
- We pray for our national and local leaders
- All school districts—All staff and students
- for those with medical issues large and small
- David and Brandy and family
- Those with Alzheimer's and their families
- those experiencing financial pressures
- those fighting addiction or cancer
- all those in nursing homes and their families
- Will's kids
- Evan Clarkson, Andrew Kazmierczak, Robert Schulte, Ainsley Allen and all those serving in the military
- Sandy Zupanovich
- Gregg Symuleski and family
- Nancy Marr
- law enforcement officers & EMS
- hospital workers and fire personnel
- George Lotter
- Truck drivers, farmers & Small businesses
- Patrick Simons
- Bob Simons
- Mark Ezdebski
- Dave Casey
- Earl Gow
- Karen Doolittle
- Karen Jones relative
- Lynn Hernandez
- Chris (Paula Smith's brother)
- Charlie Ahearn
- Andy Granick
- Joanne Zick
- War in Ukraine
- Millie Tingley
- Phil (Schulte's son)
- Abby Toolan's dad (Ben Heckman)
- Norma and Lynola Carey
- Buzz Gulick
- Leanne Colwell and family
- Jennica Drake
- Continued health for Charleene Marten's family member
- Ron Phillips
- Wayne Wellman
- Don Lindsey
- Steve Holtzmaster
- Lynn—friend of George Lotter
- Werkheiser family—recovery from fire
- family of Joanne Decker
- Maureen Warren—continued improvement
- Cheryl Augustine
- Family of Barbara Pease
- Barbara Parraga—knee surgery
- Joe Cowan
- People in Maui
- Skip Borrows
- Ruth Taugher

Birthdays and Anniversaries



September birthdays and anniversaries

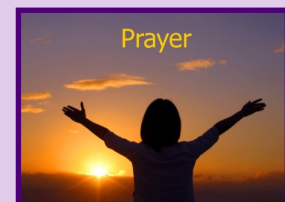
| | | | |
|--------------|---|--------------|--|
| September 3 | Brett and Dena (Simons) Dew Laurie Thorn | September 16 | Brad Millard Alice Archer |
| September 4 | Joe Kulyeshie Hunter O'Malley Benjamin Millard Lydia Herbert | September 18 | Jason and Jessica Miller Wayne Wellman |
| September 5 | Kaiden Warren Bob and Dot Simons | September 20 | Don Lindsey |
| September 6 | Breanne Simons Hiller Ron and Jacqueline Phillips | September 21 | Rick and Dana Empet Allan and Kaylee Phelps |
| September 7 | Ralph and Ivie Simons | September 24 | Delaney Hiller Aiden Empet |
| September 11 | Jeffrey Zick | September 26 | Henry Rush Simons Griffin Patrick Simons |
| September 13 | Leanne Colwell | September 27 | Patrick Simons |
| September 14 | Aspen Batzel | September 28 | Harry Gardner |
| | | September 29 | Jacob heller |
| | | September 30 | Bridget Zick Sherring |

Problems or Issues regarding Harford First Congregational Church—UCC?

Pastoral Relations is the group that handles all concerns, issues and difficulties that can not be resolved directly. These meetings are confidential. Contact the office if you find that you need to meet with Pastoral Relations at **570-434-2260**.

Emails: It has come to our attention that some of you may not be receiving our email prayer lists. This is an oversight that we would like to correct. Please call or email Judy and let her know that you are not receiving the emails.

Tel.570-434-2260 Email: firstchharford@gmail.com



Attention!

We are fully open for worship at 10:00 am each Sunday!

We have been eager to worship together again. We are now open!!! Our ushers and greeters will be present during the service.

Hymnals and Bibles may be utilized but all text will be available via our new monitors in the sanctuary. We would like to invite those who do not feel ready to worship in groups to watch our livestreaming worship at 10:00 am.



<https://www.youtube.com/channel/UCmQ-Xr0IE5xwdZS0yVs7dtg>



Men's Breakfast

at 7:30am

at Bingham's Restaurant.
The second Tuesday of each month.



The Website is up and running.

We have worked hard, but we realize that important things may not have been included. We are still adding and changing things so if you have suggestions, please email Holli Chichester at hollischichester@gmail.com or call 301-643-1775. Please check it out at

www.firstchurchharford.com



Weinberg Food Bank

Harford First Congregational Church
Please contact Tammy if you have registered but do not plan to pick up.



at distributions Friday, September 22, 2023

Friday, October 27, 2023

Any income can apply, complete the form online firstchurchharford.com or call Tammy @ 570-396-7081.



Day of Distribution please bring with you a photo ID and a current household bill with your current Susquehanna County address.



Women's Lunch

**3rd Monday of each month
12:00 at Bingham's
All Welcome!**



Bring a Friend

Greeters and Ushers

**September 3rd- Alyssa Nolan
Melissa Clarkson**

**10th- Karen Jones
Judy Mitchell and Emma**

**17th- Sherry Decker
Chris Manley**

**24th- Bill Chichester and Mikey
Sharon Frantz**



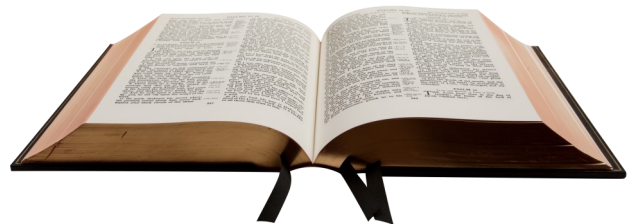
Lay Readers

September 3rd- Sue Needham

10th- Ellen Holdredge

17th- Earl Cottrell

24th- Nancy Burris



Celebrate the joys in life!

**Celebrate birthdays, anniversaries, weddings,
births, graduations and let us celebrate with you!**

Contact Tammy at 570-396-7081

for more information or to request your celebration sign.



The Hawaii Conference United Church of Christ

PNEC Conference Minister Bonnie Bates received the following email dated 8/12/23 from Rev. David Popham, Hawaii Conference Minister. This email was sent to all Conference Ministers. Bonnie wanted to share it with our churches and members.

Regarding monetary donations: Congregations may mail their donations toward the Maui Fires to the Conference Office (431 Delaware Ave, Palmerton, PA 18071) or mail them directly to the United Church of Christ at P.O. Box 71957, Cleveland, PA 44194.

Once again, thank you all for your kind words, prayers, and holding us in the light of God. Many of you have been through disasters before and I appreciate your insights and hard-earned wisdom.

Lahaina:

Today the fire has become the worst natural disaster for the islands since becoming a state. The Hilo tsunami of 1960 killed 61 people, Hawaii's deadliest disaster. The death toll for Lahaina is now 67.

Authorities are letting residents back in. But it's over a dirt road that runs along cliffs. On top of that once you get in there is no electricity, water, or phone service. A few hearty folks are remaining in town. 80% of the town (1700 buildings) were destroyed or damaged.

Waiola Church - the campus did burn. The concrete walls of the sanctuary remain. Interestingly the front lawn and historic cemetery were not touched by the fire. Kahu Rosa's house survived, but the next three houses (all family members) did not. All members of the church have been accounted for except for one couple. While we hope it's just a matter of contacting them. We are preparing for bad news.

Other Maui Fires:

Four major fires erupted on Tuesday. All four are still burning, but at presently not a major threat. We had two ministers in evacuation zones and one prepared to get the order. A fourth minister, Kahu Kojima, reported a distant relative in Lahaina did not survive. The relative had a heart attack while evacuating.

All totaled four churches were under threat by the fires. Three fared well and one is attending to the needs of fire victims in the upcountry area of the island where the church is located.

What Happened:

Along with what's being carried in the news, Maui regularly has brush fires this time of year. It is the midst of our dry season and August heat does not help. On Tuesday multiple brushfires broke out across Maui, the four large ones and I've heard about five small ones as well. Living on islands, we cannot call in the fire brigade from the next county over. The fire above Lahaina had been contained and was all but extinguished when the winds picked up - 60 to 80 miles-per-hour gusts. The fires broke out and thinly stretched personnel could not keep up with them.

Relief and Recovery Response:

The Conference adopted a two-pronged approach. An immediate release of funds for churches on Maui to distribute in the communities as they see fit. This was a bit hampered in Lahaina as there is no longer a post office to send a check too and there is no longer a bank to deposit the check in. We are thankful for wire transfers and bank branches.

The Hawaii Conference United Church of Christ—continued

The second prong is long-term recovery which our Conference Disaster Coordinator, Danny Tengan, is already involved in. He is former military and very good at telling us where to be, when to be there, and what to do when we are there.

The Conference has opened up a 2023 Hawaii Fires Relief Fund. Donations will be split along our two-pronged approach as needs dictate. We are telling people the following:

For those who are in the wider UCC family please give through the National Offices Relief and Recovery Fund. We are working in partnership with them.

For those in the Hawaii Conference or not UCC to give through the Hawaii 2023 Fires Relief Fund.

Wailoa Church is requesting those wanting to donate to them specifically to give through the Conference. These gifts must be marked "Wailoa Church" or they will be assumed into the general fire fund which is being used for multiple locations and needs across Maui.

The Spiritual Pulse:

The magnitude and longevity of recovery is just now becoming a reality for our Maui clergy. The adrenaline rush is fading and grief and a sense of being overwhelmed is on the rise. Pacific Island culture is about pulling together and that is happening across the neighboring islands, but access to Maui is limited to essential workers and residents and much of "pulling together" means "presence" for our folks. I am not sure how this will play itself out.

I will be on Maui on Tuesday as part of an ecumenical prayer service. The Catholic Bishop got that declared an essential activity. Woot! Woot! Bisho Silva.

Mahalo for all the kind words and prayers.

Notice: Please send all material for October to be included in the Spire to:

Firstchurchspire@gmail.com

by the 15th of September 2023!

IMPORTANT NOTICE

Memorial Plaque Information

Are you interested in having a plaque attached to the memorial stone in the memorial garden? One may have a plaque ordered by doing the following:

Cost---\$25.00

Send check (made out to Harford First Congregational Church -UCC) along with name of person and the year of birth and the year they passed away to the office.

The office will then proceed to order the plaque and have it placed on the stone.



Thank you.



2023-2024 Annual Subscription Drive
 Harford Volunteer Fire Company Ambulance
 Post Office Box 205
 Harford, Pennsylvania 18823

Please provide us a list of names for those to be covered under your subscription.

Enter Subscription Amount
 \$35.00 (Family)
 \$25.00 (Individual)
 Total enclosed

FAMILY MEMBERS

1. _____
2. _____
3. _____
4. _____
5. _____
6. _____
7. _____
8. _____

Make check payable to: Harford Volunteer Fire Company

Please detach along this line.

HARFORD VOLUNTEER FIRE COMPANY AMBULANCE



2023-2024 ANNUAL MEMBERSHIP DRIVE

www.firebook.com/Harford-Volunteer-Fire-Company

HOW TO PHONE IN AN EMERGENCY

1. Give the name and telephone number of the residence where you are.
 2. Give the name of the township or town from which you are calling.
 3. State the nature of the emergency.
 4. Give directions as clearly and accurately as possible including the street names or route numbers or names of your neighbors.
- LEARN WHERE YOU LIVE!**

In order to speed up EMERGENCY SERVICE to your location, please inform the dispatcher answering your call that you are a subscriber to the HARFORD AMBULANCE and you wish them to respond. Also, please give the township in which you live.

EMERGENCY NUMBERS

There's only one number to remember



and ask for the
 HARFORD Ambulance.

DEFINITION OF SERVICE

EMERGENCY - Any life threatening situation whereas medical attention is required on the scene or enroute to a medical facility.

ROUTINE - Any situation when an individual must be transported to a medical facility whereas he or she is unable to be transported by any other means due to disability or illness.

TAXIRIDE - Whenever an individual is physically capable of being transported by private vehicle and does not need the attention of medically trained personnel until arrival at the facility. (Please note that the ambulance crew has the right to refuse any transport of this type in order to insure the availability for emergency service. **UNDER NO CIRCUMSTANCES WILL THESE TRANSPORTS BE INCLUDED IN THE AMBULANCE MEMBERSHIP YOU WILL BE CHARGED A FULL FEE!**)

COVERAGES DEFINED

FAMILY - Mother, father and any person less than 21 years old who permanently reside in the household. Persons older than 21 who permanently reside in the household will need an additional INDIVIDUAL coverage.

INDIVIDUAL - A single person or anyone 21 years of age or older living with a family.

Our ambulance is not available for non-emergency transports.

Willing questions? Phone 570-434-2839

WHY SUBSCRIBE?

Regardless of who needs emergency medical services, an ambulance will be dispatched to your location. A bill will be admitted to your insurance company for payment. If you are transported in the HARTFORD AMBULANCE and you are an eligible subscriber, we will waive any balance that becomes your responsibility as a result of co-pays, high deductibles, or co-insurance. If you are a non-subscriber, any portion of the bill that is not paid by your insurance company is your responsibility.

If you have no insurance and are transported in the HARTFORD AMBULANCE, your subscription will cover your emergency ambulance trip AT A REDUCED RATE. If you have no insurance and are a non-subscriber, you are responsible for paying the bill.

Our charges for use of the ambulance are as follows:

The BLS base charge is \$650.00 and \$20.00 per loaded mile. The ALS base charge is \$860.00 and \$20.00 per loaded mile.

The dates of membership are July 1, 2023 thru June 30, 2024. Our enrollment begins June 1, 2023, and will continue until June 30, 2023.

Memberships received later than June 30, 2022 will take effect 10 days after the receipt of your check.

THIS WILL BE YOUR ONLY NOTICE!



Calling for an Ambulance

If you have the occasion to need 911 services, the call is answered in the Susquehanna County Communications Center in Montrose, Pennsylvania. Depending upon answers to questions that the dispatcher will ask you, an Advanced Life Support (ALS) unit may be dispatched along with our BLS ambulance. This unit will provide an advanced level of care to the patient (IV and drug therapy, cardiac monitoring). We currently have joint billing agreements with all the ALS units in Susquehanna and Lackawanna County. If you are a Medicare patient, one bill will be sent to your insurance company for payment. For non-Medicare patients, a one bill will be sent if a Lackawanna County ALS was utilized for your call. If a Susquehanna County ALS unit was used, you may see two bills - a BLS bill for the transporting ambulance and an ALS asset bill for the paramedic services. Regardless of what ALS service is utilized, your membership fee will cover any unpaid portion of the bill. If you are transported in our ambulance, this cost means a savings of hundreds of dollars to you.

Subscription Coverage Update

Your subscription covers you only if you are transported to the hospital in the Hartford Ambulance. There are times when our ambulance may not have a crew to respond to your call. We are working very hard to increase our staff to eliminate or drastically decrease lack of responders. In these instances, a neighboring ambulance will be sent to your emergency. Unfortunately, we cannot expect our neighboring ambulances to honor our memberships. You will most likely get a bill for their services. We encourage you to read this brochure to see how these changes affect your situation.

Susquehanna County Addressing System

Several years ago, Susquehanna County re-addressed every property in the county. One of the purposes of this re-addressing is to assist emergency responders in locating your home or the location of your emergency. All

properties in Susquehanna County have been re-addressed by street name and number. Township or borough officials have assigned street names. Street numbers have been determined by the GPS location of your house on the street. If you have not already done so, you are asked to immediately remove your old box number from your mailbox and replace it with your new number. Reflective numbers work best. Please be sure that the number can be seen from both directions of travel on your road. Do not place the numbers behind the mailbox flap. If you do not have mail delivery, you are requested to place your number on your house. These numbers must be visible from the road and visible at night. If your house is not visible from the road or your mailbox is grouped with several other mailboxes, you will need an address plate with your number affixed to it placed at the end of your driveway. These reflective plates are available for purchase from us at a nominal charge of \$15. You are not required to purchase these specific plates but they will be the standard for the county.

Address Labels

The address labels that we use for our membership drive are purchased through the Susquehanna County Assessment Office. These are the names and addresses the assessment office uses to mail tax notices to the property owners. If the name(s) or address on the label is not correct, you must call the assessment office to make the changes. The Hartford Volunteer Fire Company and Ambulance cannot make the changes for you.

Dear Friends and Neighbors:

The Members of the Hartford Volunteer Fire Company Ambulance would like to thank those who participated in our 2022-2023 Membership Drive. Over 2,000 letters were mailed with about a 70% return rate. We raised over \$40,000 through this appeal. We truly are grateful to all your financial donations to support us.

The Hartford Volunteer Fire Company maintains two fully equipped basic Life Support ambulances to meet the needs of the community. With your donations Hartford Volunteer Fire Company is able to maintain, upgrade and keep our Ambulances equipped with the updated equipment needed to serve and protect our community.

A problem that we frequently encounter during the winter months is snow covered walks and driveways. It presents a danger to our responders and makes it difficult to service many of the patient's residents or seniors in the actual patient. If you can, please keep your walks and driveways clear of ice and snow as best you can.

We are constantly looking for individuals who would like to help serve the community by helping on the ambulances. Serving our ambulances is becoming a very difficult job. Nearly all of our volunteers have full time jobs and have less and less time to devote to our service. Would you consider joining us? We will provide training if you offer your time. All our positions are volunteer positions. Please give us a call at 570-494-2829 and leave a message. We would love to talk to you about joining our ranks.

We hope that you will take the time to read the rest of this brochure and take advantage of our subscription service. We derive our operating funds to continue providing the life saving service to our community. Please take note of the dates of our drive and respond as quickly as possible.

Thank you.

Hartford Ambulance Fund Drive Committee





Harford Park Fundraising

Construction on Harford Park is about to begin! If you would like to be a part of this wonderful addition to our community, this is how you can help. The figures below are estimates and more definitive costs will be given at the time of purchase.

Listed below are the items currently available for purchase:

| | |
|-------------------------------------|-----------|
| Engraved Bluestone Benches | \$ 2,500 |
| Bluestone Benches without engraving | \$ 1,500 |
| Engraved Bluestone Pavers | \$ 100 |
| Picnic Tables | \$ 1,000 |
| Trees/Shrubbery | \$ 200 |
| Playground Equipment | \$ 10,000 |

***Please reach out with any additional ideas for donations. All ideas and inquiries are welcome!**

**If interested, please contact Erika Gething
Call or Text- (570)-557-9048 or Email- egething10@gmail.com**

Harford Township Municipal Authority

Clifford United
Methodist Church
Main Street, Clifford
Chicken and Biscuit Dinner
Chicken, Biscuit, Mashed
Potatoes & Gravy, Green Beans,
Harvard Beets & Dessert
Wednesday, Sept 20th, 2023
TAKE OUT ONLY - DRIVE THRU
FROM 4:00 to 6:00 pm or until

Sold out
Donation \$12





Ambassador Program Report

Aug/Sept 2023

What does PNEC
do for us?



Highlights for Aug/Sept available to church members from your covenantal partner, *Penn Northeast Conference and the Generosity, Friends of Conference, Team!*

Do you need ideas for revitalization? **Vitality Days are back!**



PNEC Presents: Vitality Days Conference.
Saturday, October 7th from 9 AM - 3 PM.
At Jordan UCC

Includes: Presentations on creating relationships for renewal.



CELEBRATING OUR CONNECTION IN CHRIST

COVENANT SUNDAY! November 19th, 2023.

We can do so much more together when we join forces.

Please join in the celebration and support each other in Christ!

Worship materials will be sent in September.



Sleepout for Homelessness

*This mission project of the PNEC Youth benefits
Family Promise*

Dates/Time: October 14-15, 2023, 7pm-7am

Where: Greenawalds UCC

September 2023

September 2023

October 2023

| | | | | | | | |
|----|----|----|----|----|----|----|----|
| Su | 1 | 2 | 3 | 4 | 5 | 6 | 7 |
| Mo | 8 | 9 | 10 | 11 | 12 | 13 | 14 |
| Tu | 15 | 16 | 17 | 18 | 19 | 20 | 21 |
| We | 22 | 23 | 24 | 25 | 26 | 27 | 28 |
| Th | 29 | 30 | 31 | | | | |
| Fr | | | | | | | |
| Sa | | | | | | | |

| | | | | | | | |
|----|----|----|----|----|----|----|----|
| Su | 3 | 4 | 5 | 6 | 7 | 8 | 9 |
| Mo | 10 | 11 | 12 | 13 | 14 | 15 | 16 |
| Tu | 17 | 18 | 19 | 20 | 21 | 22 | 23 |
| We | 24 | 25 | 26 | 27 | 28 | 29 | 30 |
| Th | | | | | | | |
| Fr | 1 | 2 | | | | | |
| Sa | | | | | | | |

| SUNDAY | MONDAY | TUESDAY | WEDNESDAY | THURSDAY | FRIDAY | SATURDAY |
|---|---|---|---|---|---|---|
| Aug 27 9:30am Fellowship 10:00am Worship service (Sanctuary) | 28 Labor Day--Office closed NO Quarterback mtg (PO) NO Trustees (PO) | 29 7:00pm Choir practice | 30 6:30pm WW mtg (LH) | 31 10:00am Pastor in office (Office) | Sep 1 10:00am Pastor in office (Office) | 2 10:00am Pastor in office (Office) |
| 3 9:30am Fellowship 10:00am Worship service (Sanctuary) | 4 9:30am Quarterback mtg (PO) 7:00pm Trustee mtg (PO) | 5 7:30am Men's Breakfast (Bingham's) 9:00am Pastoral 9:30am Ugly Quilts (LH) 7:00pm Choir practice | 6 9:30am Ugly Quilts (LH) 1:00pm Missionary mtg (LH) 7:00pm Choir practice | 7 9:30am Quarterback mtg (PO) 7:00pm Trustee mtg (PO) | 8 9:30am Ugly Quilts (LH) 7:00pm Choir practice | 9 9:30am Ugly Quilts (LH) 1:00pm Missionary mtg (LH) 7:00pm Choir practice |
| 10 9:00am Sunday School 9:30am Fellowship 10:00am Worship service (Sanctuary) 11:15am Handbell | 11 9:30am Quarterback mtg (PO) 7:00pm Trustee mtg (PO) | 12 9:30am Ugly Quilts (LH) 1:00pm Missionary mtg (LH) 7:00pm Choir practice | 13 9:30am Ugly Quilts (LH) 1:00pm Missionary mtg (LH) 7:00pm Choir practice | 14 9:30am Ugly Quilts (LH) 1:00pm Missionary mtg (LH) 7:00pm Choir practice | 15 9:30am Ugly Quilts (LH) 1:00pm Missionary mtg (LH) 7:00pm Choir practice | 16 9:30am Ugly Quilts (LH) 1:00pm Missionary mtg (LH) 7:00pm Choir practice |
| 17 9:00am Sunday School 9:30am Fellowship 10:00am Worship 11:00am 11:20am Deacons | 18 9:30am Quarterback mtg (PO) 12:00pm Ladies Lunch (Binghams) | 19 9:30am Ugly Quilts (LH) 1:00pm Missionary mtg (LH) 7:00pm Choir practice | 20 4:00pm Clifford chicken/Bis (Clifford Meth) 6:00pm Stewardship mtg (LH) | 21 10:00am Pastor in office (Office) 10:00am KWW mtg (Ellen's) | 22 4:30pm Weinberg Distribution (Outside) | 23 10:00am Pastor in office (Office) 10:00am KWW mtg (Ellen's) |
| 24 9:00am Sunday School 9:30am Fellowship 10:00am Worship service (Sanctuary) 11:15am Handbell | 25 9:30am Quarterback mtg (PO) | 26 9:30am Ugly Quilts (LH) 7:00pm Choir practice | 27 9:30am Ugly Quilts (LH) 7:00pm Choir practice | 28 10:00am Pastor in office (Office) 6:00pm Council mtg (LH) | 29 10:00am Pastor in office (Office) 6:00pm Council mtg (LH) | 30 10:00am Pastor in office (Office) 6:00pm Council mtg (LH) |

Non-Profit Organization

US Postage Paid

Permit—#20

Montrose, PA 18801

Harford First Congregational Church –UCC
5016 Creek Road
PO Box 217
Harford, PA 18823
Tel. 570-434-2260
Email: Firstchharford@gmail.com
Spire email: firstchurchspire@gmail.com
Web URL: www.firstchurchharford.com
Live Worship: <https://www.youtube.com/channel/UCmQ-Xr0IE5xwdZS0yVs7dtg>

.....the people in darkness have seen a great light

Isaiah 9:2

Join Us Each Sunday!!

RETURN SERVICE REQUESTED

DATED MAIL

PLEASE DO NOT DELAY



Harford First Congregational Church—UCC

Rev. Dr. William Hagenbuch –Pastor
Home Phone: 570-434-7729
Email: Pastorwill.firstchurch@gmail.com
Office Hours: Thurs. 10-12:00

Judy Mitchell –Sec
Hours: Monday 1:00-5:00
Friday 1:00-5:00